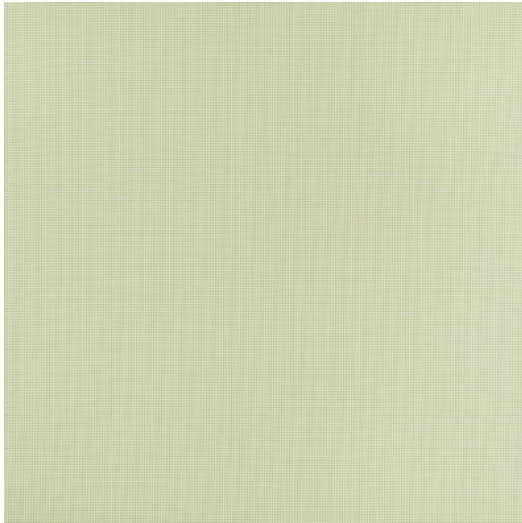




QUIMPER



| | |
|---------------------------|---|
| Référence | QUIMPER 3 |
| Couleur | Vert |
| Dimensions | Br/L/W \pm 158 - 160 CM (\pm 62.2 - 63 IN) |
| Raccord | H \pm 1 CM (\pm 0.4 IN) |
| Composition | 100% PL Trevira CS |
| Martindale/Pilling | shrinkage through washing 60° of \pm 3% |
| Poids | \pm 320 gr/m |
| Non Feu | Oui |
| Entretien | |
| Collection | bretagne |
| Utilisation | Rideau Contract |