





WIND

E x c l u s i v e D e s i g n

WIND

E x c l u s i v e D e s i g n

Founded by the De Zutter family in 1954, Wind is today an international reference in high-quality textile creation and design.

The origin of the name WIND comes from the beautiful house, where all our offices, stock and quality control is still being carried out. The house name in Flemish is called "Huyze Windroos" which means "the weathervane house".

In the 50's and 60's, companies used the telex to communicate with each other and a 4 lettered word was needed.

We chose for the first 4 letters of the house name: "WIND"

Located in an area well reputed since as far back as the 14th Century for its textile, Wind embodies expertise and age-old tradition.

The new generation today intends to continue with the expertise and values of the brand, whilst adding their own personal touch.

Today Wind distinguishes itself by its exclusive design and its inspired collections as well as its conception of customer service.

The selection of high-quality materials and the development of an innovative design where contemporary rubs shoulders with the latest trends are the signature of the Wind brand.

Each collection offers a unique assortment of colours, motifs and textures exclusively proposed by the brand. These collections are today on show in some of the most prestigious locations throughout the globe.

Finally, the stability and development of the Wind brand have been established throughout the decades via exceptional relations with clients, retailers and agents.



Musical is a remarkable collection which is an ode to craftsmanship and design.

The irregularities and inconsistencies in the colour and weave impart the product Chess with a distinctive individuality and enhances its value as a textile-Art form.

Traditional methods are used to get to this effect.



LEFT PAGE (CLOCKWISE FROM TOP LEFT): FAME MULTI, PARADE MULTI, MIKADO 12B, FOLLIES MULTI, CHESS 1, MIKADO 0 RIGHT PAGE: CURTAINS: SALLY MULTI, CLUBCHAIR: SACHA WITH FABRIC WINNIPEG 2, CUSHIONS: CHESS 16, FOLLIES MULTI, RUG: ISABELLA MULTI



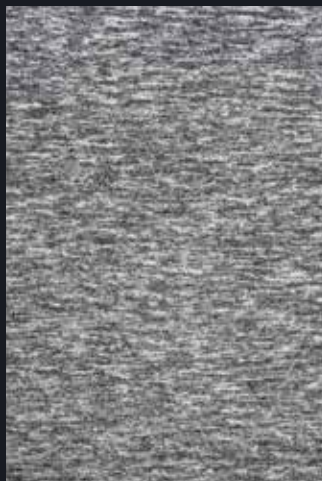


ISABELLA 5

160 cm x 230 cm (5 ft 3 x 7 ft 6) / 200 cm x 290 cm (6 ft 6 x 9 ft 6) / 240 cm x 340 cm (7 ft 10 x 11 ft 1)



ISABELLA 8



ISABELLA 7



ISABELLA multi



ALICE 8



ALICE 7



ALICE 2



ALICE 1



ALICE 16
160 cm x 230 cm (5 ft 3 x 7 ft 6) / 200 cm x 290 cm (6 ft 6 x 9 ft 6) / 240 cm x 340 cm (7 ft 10 x 11 ft 1)





Noble is a present-day collection of Trevira CS and FR polyester. This type of exquisite fabrics has the chic and affirmed elegance needed in order to create a high-end look.

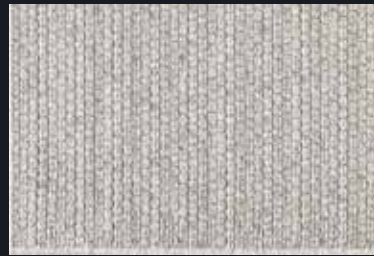
The technical requirements for contract business, the ease to treat and the beautiful looks make this collection perfect for hotellery as well as home decoration.

LEFT PAGE: CURTAINS: OLIVARES 12, BED COVER: GRIMALDI 6, RUG: MADISON 5,
CLUBCHAIR: BORIS WITH FABRIC PALOMA 8B
RIGHT PAGE (CLOCKWISE FROM TOP LEFT): OLIVARES 12, SPENCER 8, ARTOIS 5,
GRIMALDI 6

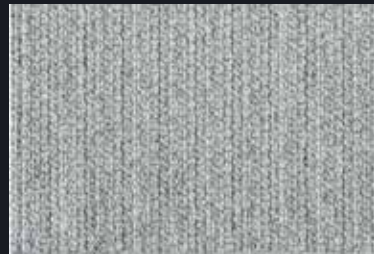


MADISON 8

160 cm x 230 cm (5 ft 3 x 7 ft 6) / 200 cm x 290 cm (6 ft 6 x 9 ft 6) / 240 cm x 340 cm (7 ft 10 x 11 ft 1)



MADISON 5



MADISON 7



EMMA 7



EMMA 8

160 cm x 230 cm (5 ft 3 x 7 ft 6) / 200 cm x 290 cm (6 ft 6 x 9 ft 6) /
240 cm x 340 cm (7 ft 10 x 11 ft 1)



KATE 7

160 cm x 230 cm (5 ft 3 x 7 ft 6) / 200 cm x 290 cm (6 ft 6 x 9 ft 6) / 240 cm x 340 cm (7 ft 10 x 11 ft 1)



KATE 8



CURTAINS: LOPARY 9
RUG: ISABELLA 8







LEFT PAGE: CURTAINS: ZEBRA 8, BLINDS: TOLIARA 8, RUG: MADISON 8, CLUBCHAIR: LOUIS WITH FABRIC WINNIPEG 16
RIGHT PAGE (CLOCKWISE FROM MID LEFT): IMITO 7, ZEBRA 5, KIRINDI 8, TOLIARA 6, DOUGLAS 6

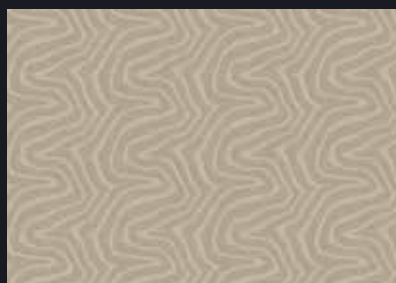


VICTORIA 7

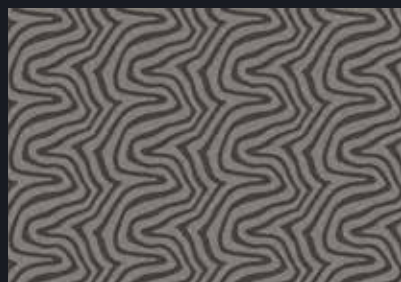
160 cm x 230 cm (5 ft 3 x 7 ft 6) / 200 cm x 290 cm (6 ft 6 x 9 ft 6) / 240 cm x 340 cm (7 ft 10 x 11 ft 1)



VICTORIA 12



VICTORIA 8



VICTORIA 4



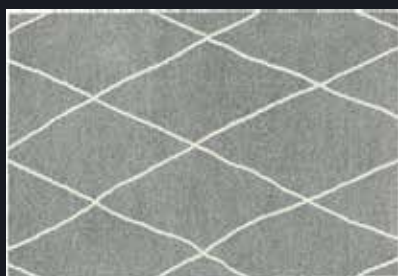
VICTORIA 11



SOFIA 8



SOFIA 5



SOFIA 7



SOFIA 4



SOFIA 16

160 cm x 230 cm (5 ft 3 x 7 ft 6) / 200 cm x 290 cm (6 ft 6 x 9 ft 6) / 240 cm x 340 cm (7 ft 10 x 11 ft 1)



LEFT PAGE (FABRIC FROM TOP): ZAMBESI 0, LOUISIANA 5, MISSISSIPPI 5B, ZAMBESI 3B, SACRAMENTO 3, ZAMBESI 8D
RIGHT PAGE: CURTAINS: LOUISIANA 5, BLINDS: MISSISSIPPI 16, RUG: SOFIA 16



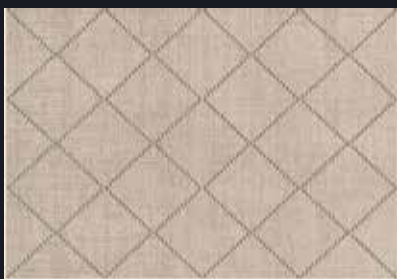


JULIETTE 8



JULIETTE 1

160 cm x 230 cm (5 ft 3 x 7 ft 6) / 200 cm x 300 cm (6 ft 6 x 9 ft 10) /
240 cm x 340 cm (7 ft 10 x 11 ft 1)



FIONA 8



FIONA 12



FIONA 7



FIONA 1



FIONA 5

160 cm x 230 cm (5 ft 3 x 7 ft 6) / 200 cm x 290 cm (6 ft 6 x 9 ft 6) / 240 cm x 340 cm (7 ft 10 x 11 ft 1)





LINNEN, GREEN BY NATURE

Linnen has some inherent ecological characteristics: all parts of the plant are used and there is no waste.

It is 100% biodegradable or recyclable.

LEFT PAGE: CURTAINS: TOLIARA 5, RUG: FIONA 5, CLUBCHAIR: WILLIAM WITH FABRIC KODIAK 6, CUSHIONS: HELSINKI 13, HELSINKI 16B



FLAX

LEFT PAGE (FROM TOP TO BOTTOM): FJORD 8B, ALASKA 6, MIRAGE 8A, ESKIMO 6, ALASKA 8B, TUNDRA 8, DORSET,
FJORD 6, DENALI 8B, ZENITH 8A, CONCORDIA, MIRAGE 8B, ESKIMO 8A, POLARIS, KODIAK 6
RIGHT PAGE: CLUBCHAIR: LOUIS WITH FABRIC WINNIPEG 9

RECYCLING

Recycling is not a choice, it is a necessity.
After all, scarcity of raw materials has been a growing problem for years.
It is uncertain how much we can get from the earth in the coming years.

Recycling is one of the solutions.

Our range of recycled fabrics uses yarns produced from pre consumer and post consumer waste.

Our recycled fabrics are sourced from suppliers following the Global Recycled Standards criteria in order to be able to track the recycled material throughout the complete production process.

Available in 3 qualities: CASPIAN | CLAIR | WINNIPEG



HIGH PERFORMANCE



FARO - SAGRES is a High Performance fabric Indoor/Outdoor.
At the same time it is Trevira CS, flame retardant.

ANDALUCIA is a High Performance fabric Indoor/Outdoor, 100% solution
dyed acrylic.

WIND's High Performance fabrics should be brush-cleaned regularly in order
to avoid that dirt or food articles accumulate and are embedded in the fabric.
As described above, High Performance fabrics are highly re-
sistant to rot, mould and fungal decay. However, mildew may grow
on dirt or on other foreign substances if the fabric is not properly
cared. The High Performance fabrics are machine washable.

High Weather resistance

Excellent colour fastness

Excellent light fastness: 7-8 (Marbella 6-7)

Indoor and outdoor use

Great textile appearance

Washable

EASY CARE...

Making life easier!



EASY CARE

Remove common household stains such as coffee, wine, mud, blood, wax crayons etc. simply, quick and easily with water and mild soap after brushing off loose dirt first.

EXTRA DURABLE

High resistance to wear and tear | Strong abrasion which makes your upholstery last long
Fresh, soft and natural touch | Machine washable 30°

ECO-FRIENDLY

No use of chemicals | It is completely non-toxic and makes you save water and chemical detergents

Available in 5 qualities: ALBERT | FIGARO | PALOMA | TIBER | TORONTO

CLUBCHAIR WITH FABRIC TORONTO 11A



alba

Exclusive

Designed to accommodate one,
the brand new ALBA club chair collection
is dedicated to those who value
quality, comfort, and aesthetics.

It comes in four models:
two with armrests and two without.

Whether to lounge carelessly
or to sit with dignity,
you will never lack comfort
and support in your ALBA clubchair.

They can be adorned by a wide range of fabrics.
Let the fresh and bright ones spark joy,
or find soothing happiness
in the soft and sumptuous.

A multitude of colours and materials
are available to suit your desire.





LEFT PAGE: CLUBCHAIR: WILLIAM WITH FABRIC GIBSON 11, CUSHION: TUXEDO 11
 RIGHT PAGE (CUSHIONS FROM TOP, LEFT TO RIGHT): FOLLIES MULTI, SALLY MULTI, LIVERPOOL 2,
 CINNAMON 11, ARNO 11, CHESS 16, DAVENPORT 0, GUITAR 16, GIBSON 11



WIND

Exclusive Design

Vandewoestijnelaan 11 • B-8790 Waregem • T +32 (0)56 62 20 30 • F +32 (0)56 61 09 14 • exclusive.design@wind.be
www.wind.be

